

## **GVF Magnum Hedger Head Parts Book**



**Gillison's** Variety  
Fabrication, Inc.

---

3033 Benzie Hwy. Benzonia, MI 49616 231-882-5921  
Fax 231-882-5637 [www.gillisons.com](http://www.gillisons.com) 800-392-6059

---

# Table of Contents

---

## **INTRODUCTION** 1

## **MAGNUM HEDGER COMPONENTS** 2

GH 12005-13, Magnum Clamp Assembly 11

GH 12065 Magnum Cam Wheel assembly 9

GH 12405, Kit, 1/4 Inch Blade, hedger Accessory 17

GH 15155L, Sickle Drive Sprocket Cover, Mag Left 12

GH 15155, Sickle Drive Sprocket Cover, Mag Right 12

Inside Of The Sickle Drive box 7

Knife Assembly on Sickle Bar 16

Nyloil Guide Plates 14

Sickle Bar Splice 13

Sickle Drive box bottom cover 6

Sickle Drive box Internal Hardware 8

Sickle Drive Box Top Inside View 10

Sickle Drive, Front view Parts 5

Sickle Drive, LH side Parts 4

Sickle Drive, RH Outside Parts 3

Steel Guide Plates 15

## **PART NUMBER REFERENCE LIST** 18

GVF Magnum Cutter Bar - complete, need to specify right or left 18

Sickle Bar Assemblies 18

Bare Sickle Bars 18

Replacement Sickle Bars 18

Replacement Tube Assemblies 18

Miscellaneous 18

## **GVF WARRANTY** 19

## INTRODUCTION

The information in this publication is intended as a parts reference book of the GVF (Gillison) Magnum Hedger Head. Your GVF (Gillison) dealer is available should items in this book or details of your machine not be understood.

The owners manual that was supplied with the hedger head should be thoroughly read and understood prior to maintenance of and operation of this machine. If your copy of the owners manual is missing please contact your GVF (Gillison) dealer or contact GVF (Gillison's). Contact information is printed on the front of this book. Your GVF (Gillison) dealer can assist in areas concerning machine maintenance.

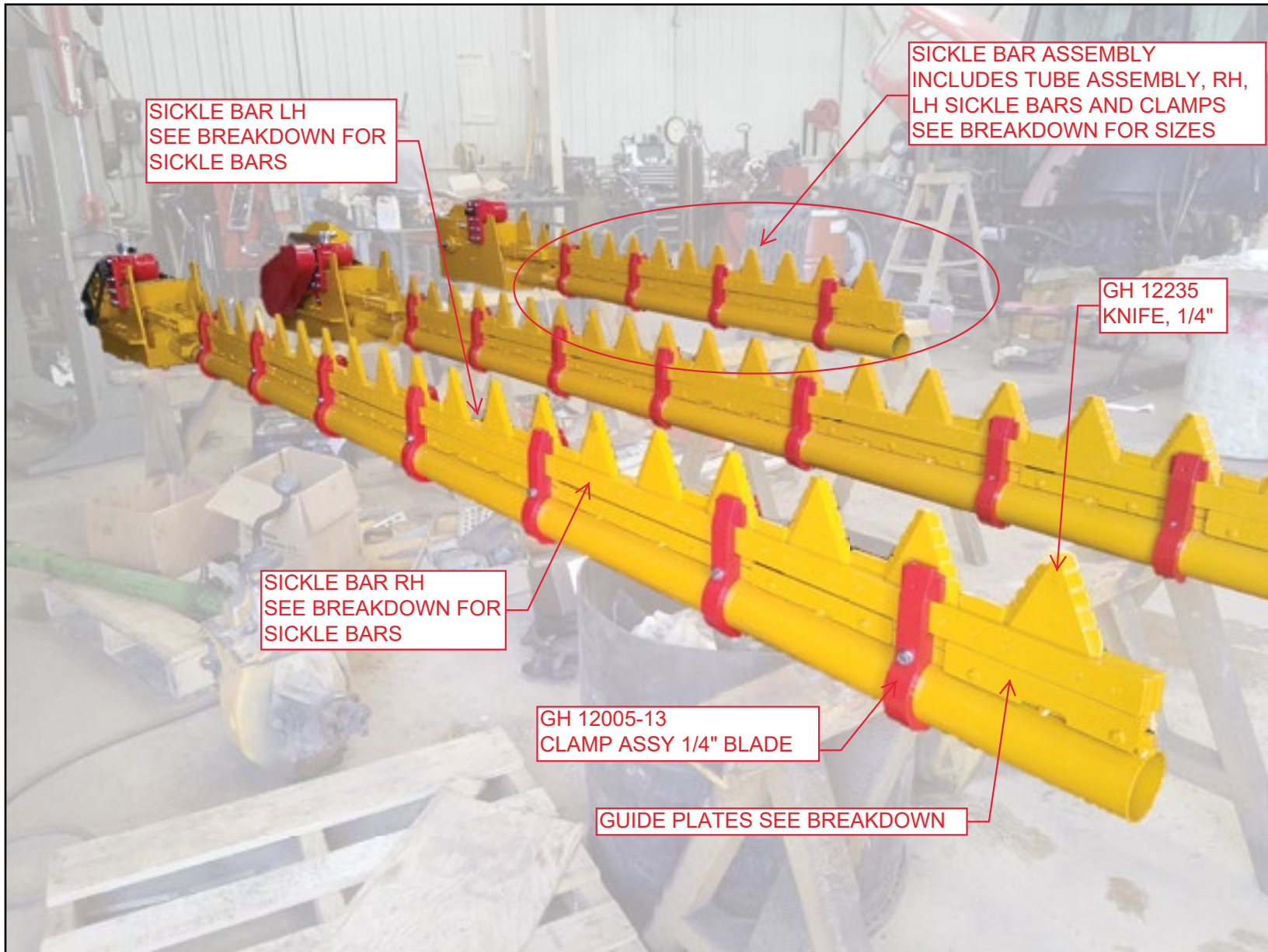
Customers are strongly advised to use an authorized GVF (Gillison) dealer in connection with any service problems and adjustments.



**CAUTION: READ THE OWNERS MANUAL IN ITS ENTIRETY PRIOR TO PREFORMING MAINTENANCE ON AND/OR OPERATING THE MACHINE. ALL WORK MUST BE PERFORMED BY A QUALIFIED INDIVIDUAL WITH KNOWLEDGE OF THE GVF HEDGER HEAD. Use only parts from your GVF (Gillison) dealer for repairs and/or replacement.**



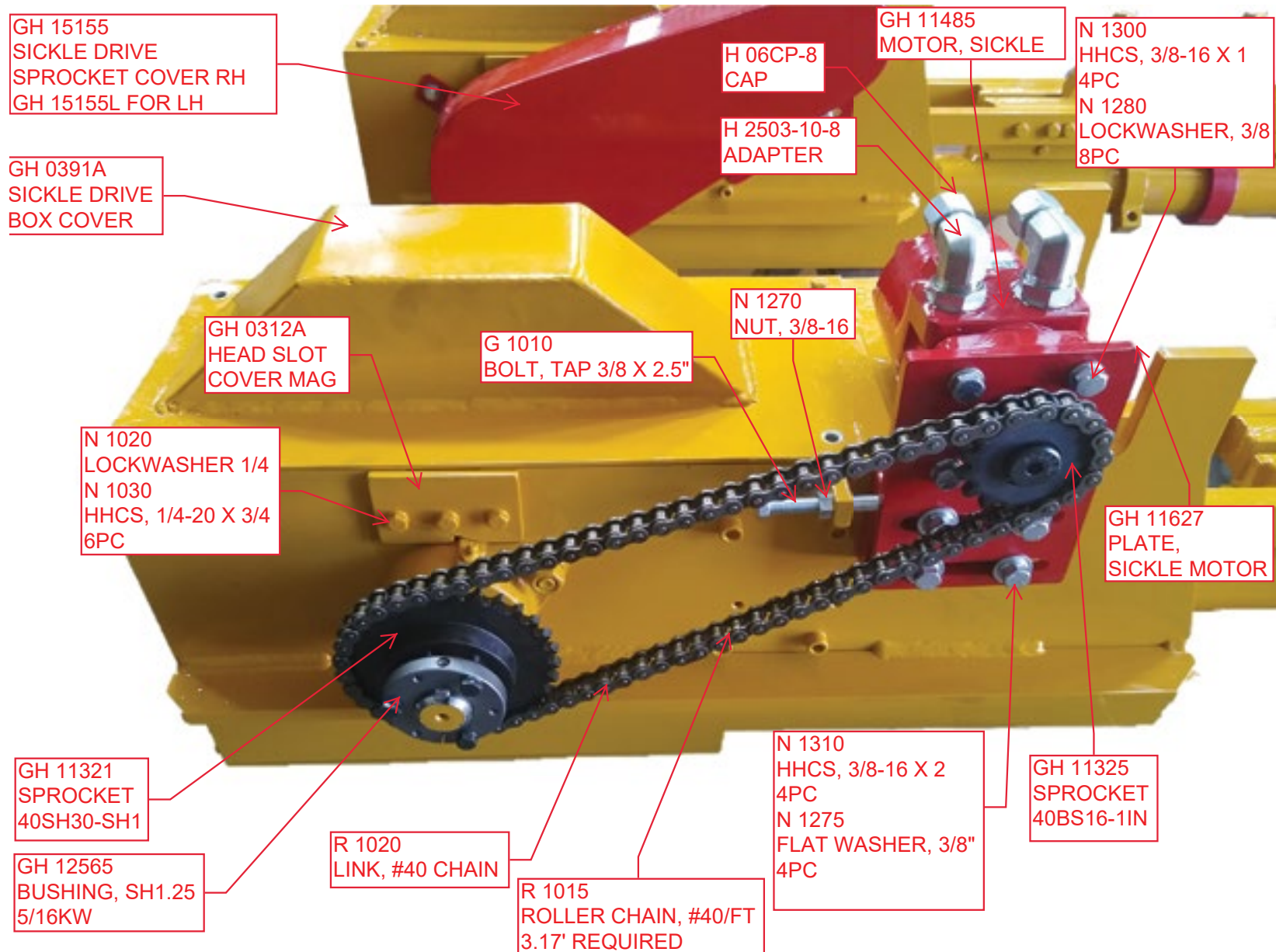
**MAGNUM HEDGER COMPONENTS**





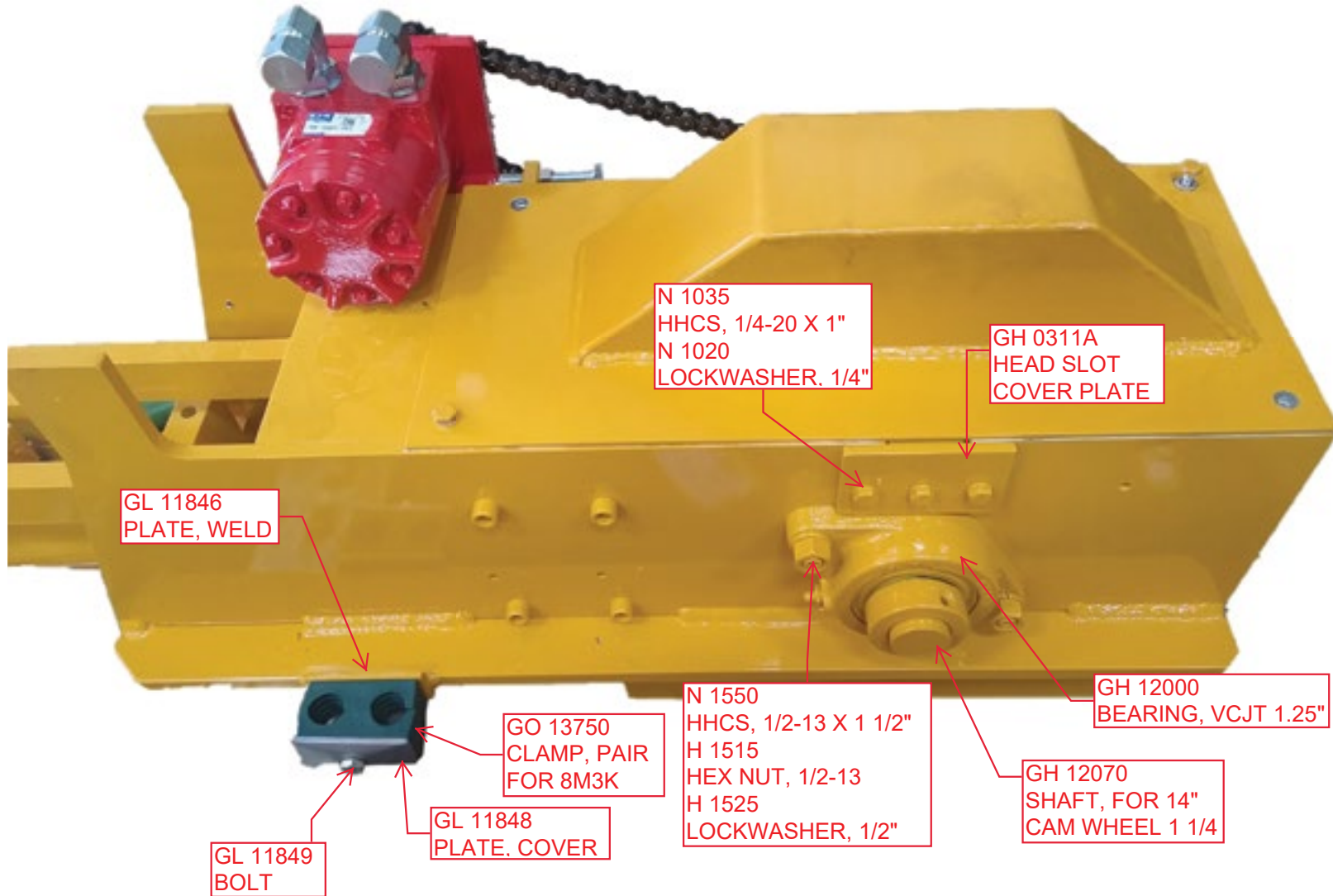
**SICKLE DRIVE, RH OUTSIDE PARTS**

Shown on a GVF I077R



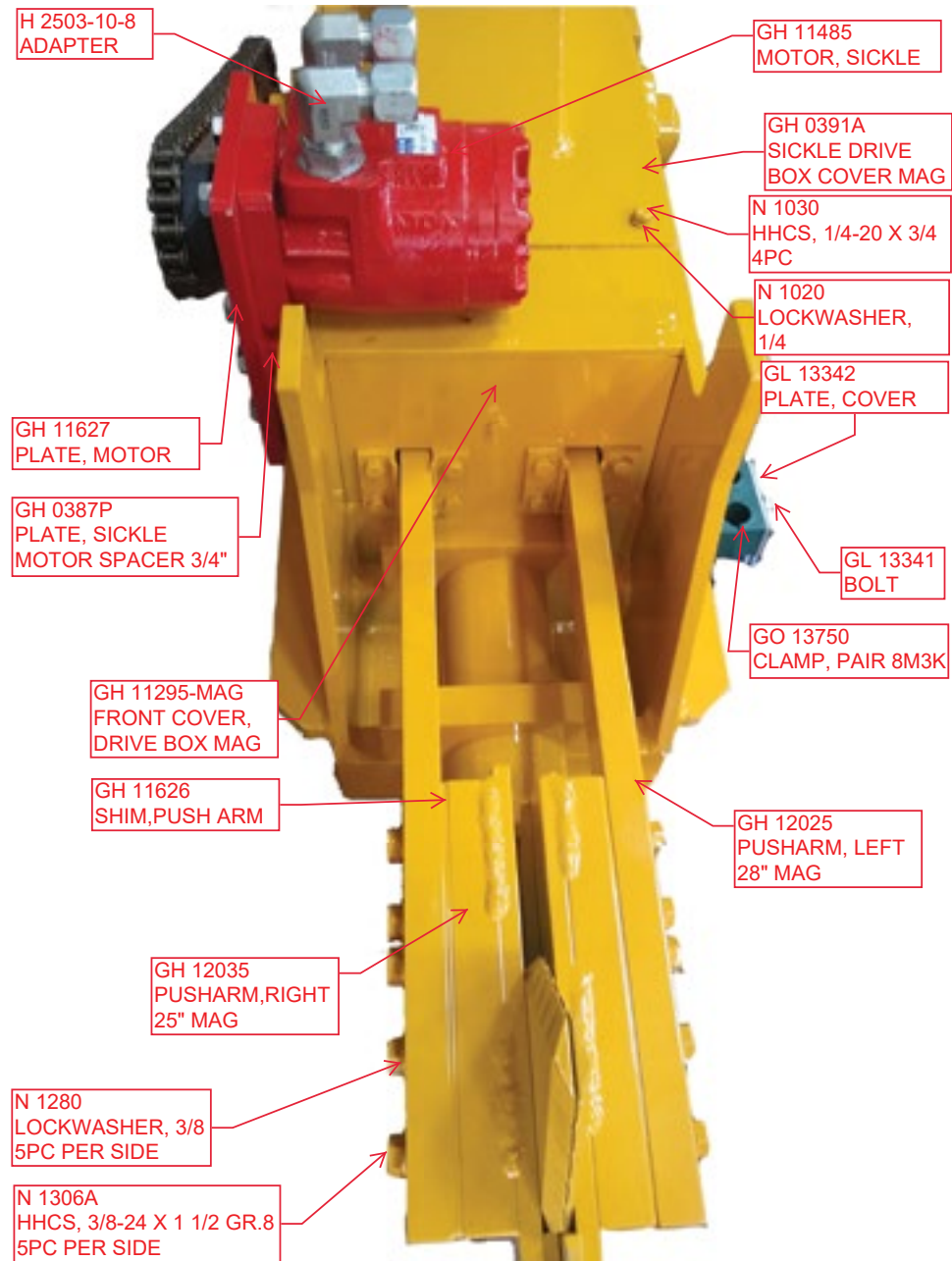
**SICKLE DRIVE, LH SIDE PARTS**

Shown on a GVF 1077R



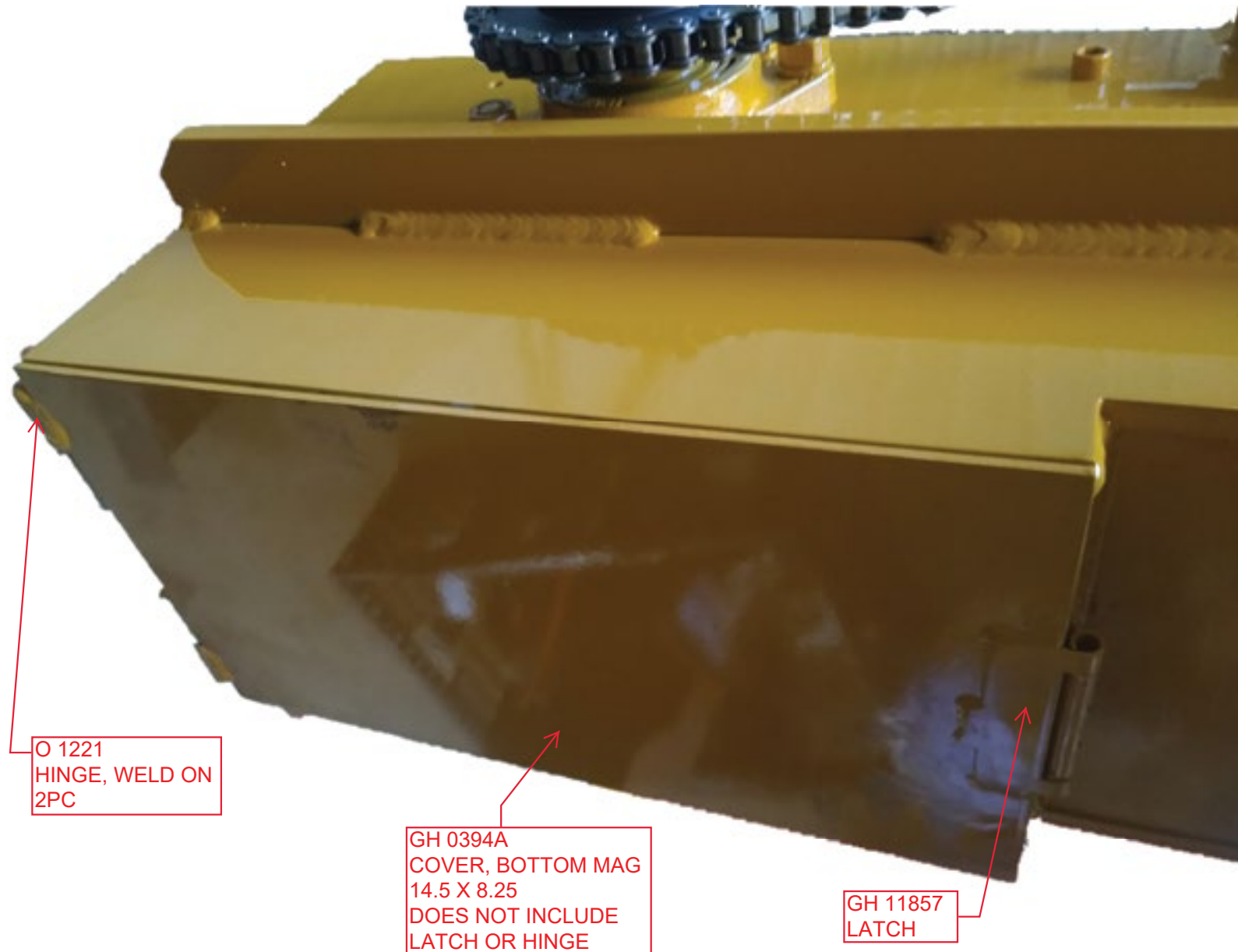
**SICKLE DRIVE, FRONT VIEW PARTS**

Shown on a GVF 1077R



**SICKLE DRIVE BOX BOTTOM COVER**

Shown on a GVF 1077R



O 1221  
HINGE, WELD ON  
2PC

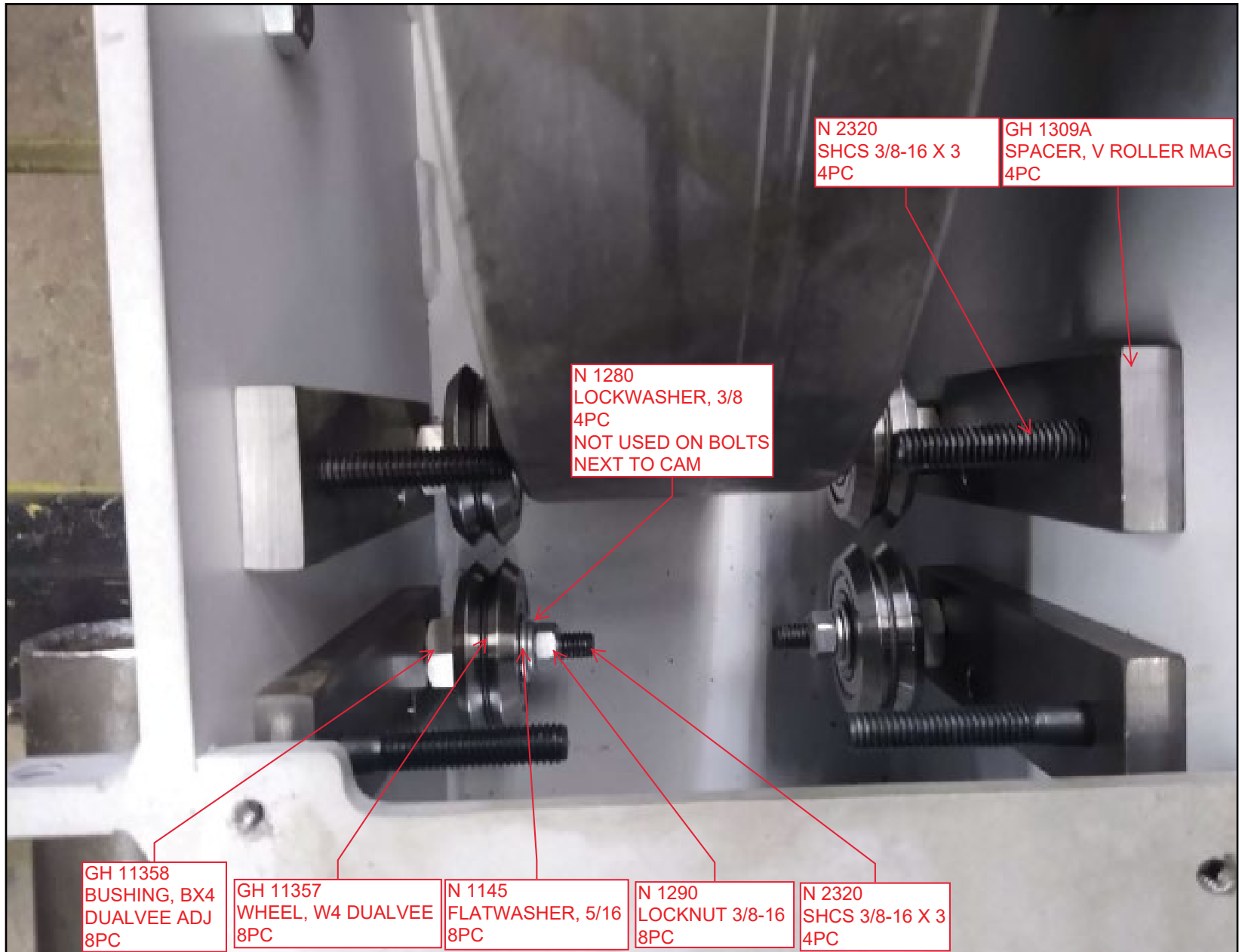
GH 0394A  
COVER, BOTTOM MAG  
14.5 X 8.25  
DOES NOT INCLUDE  
LATCH OR HINGE

GH 11857  
LATCH

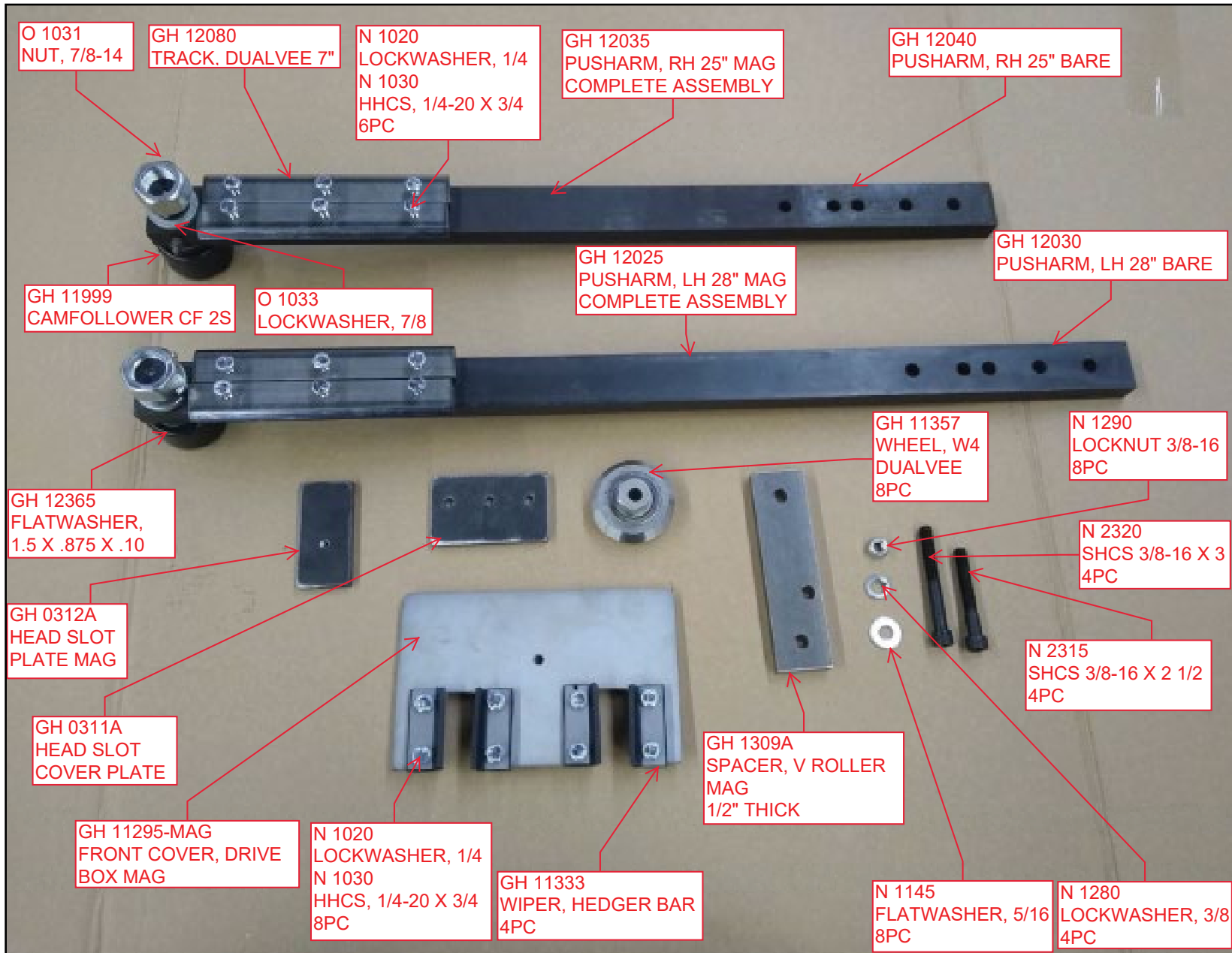


**INSIDE OF THE SICKLE DRIVE BOX**

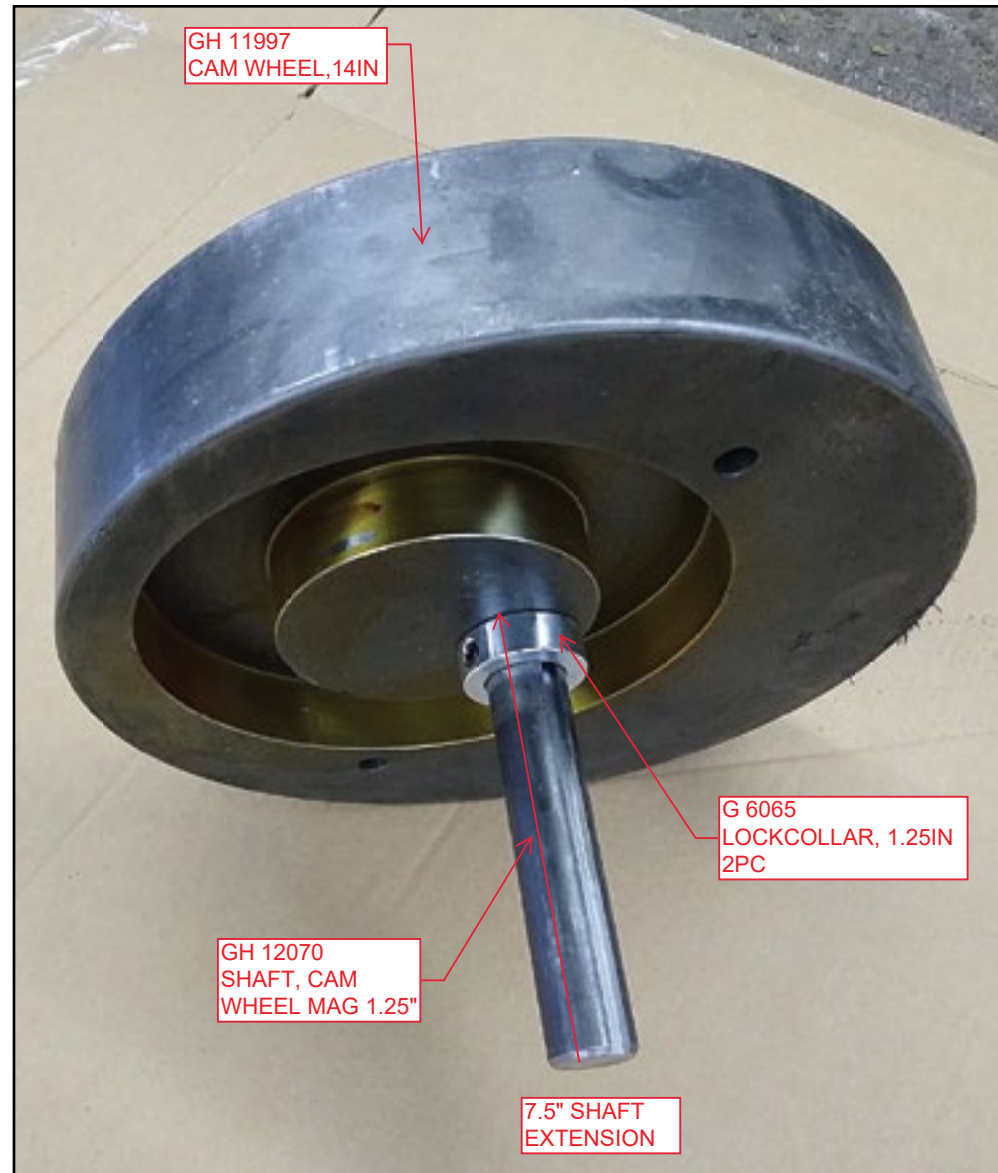
Shown on a GVF 1077R



SICKLE DRIVE BOX INTERNAL HARDWARE



GH I2065 MAGNUM CAM WHEEL ASSEMBLY



SICKLE DRIVE BOX TOP INSIDE VIEW

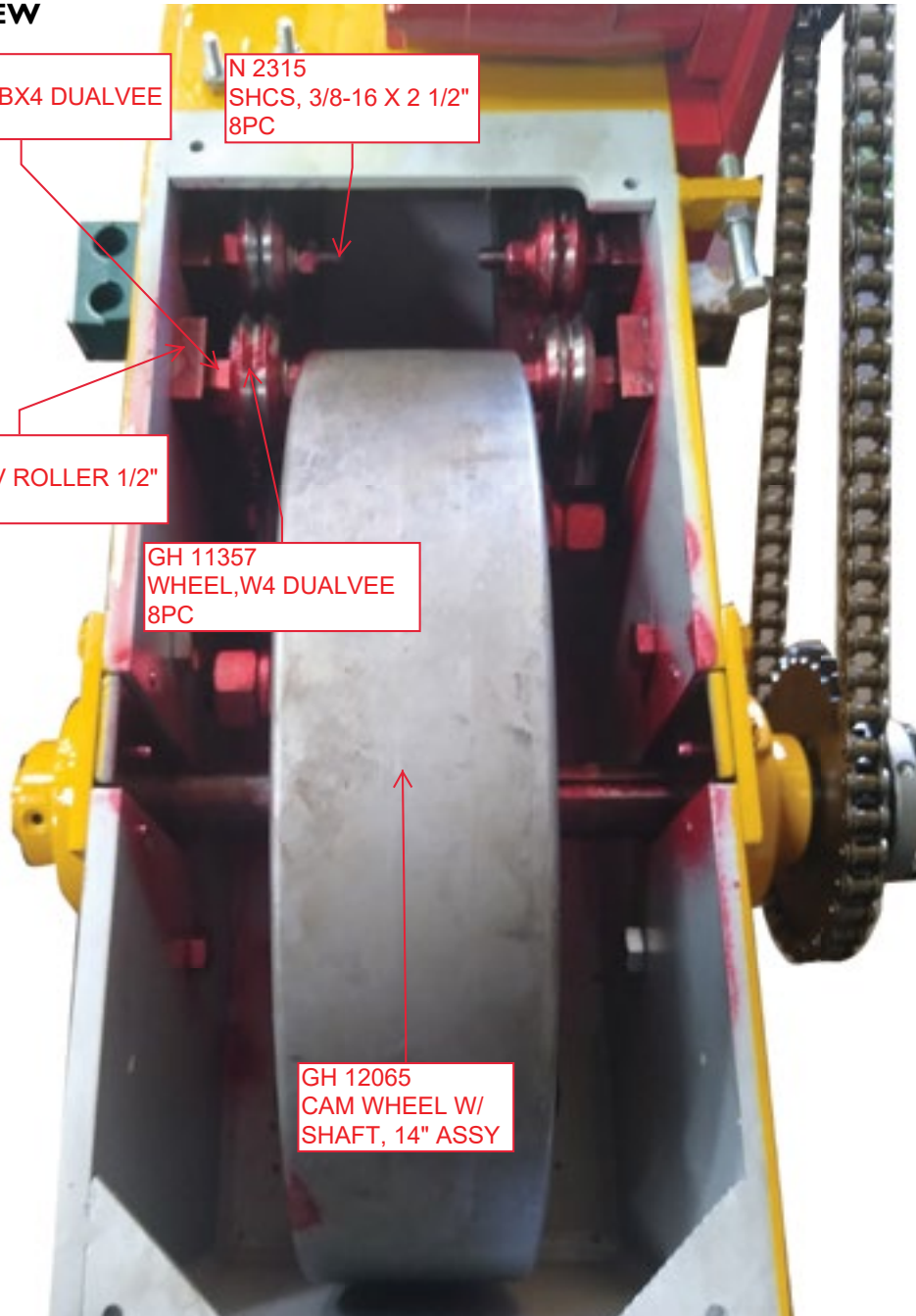
GH 11358  
BUSHING, BX4 DUALVEE  
8PC

N 2315  
SHCS, 3/8-16 X 2 1/2"  
8PC

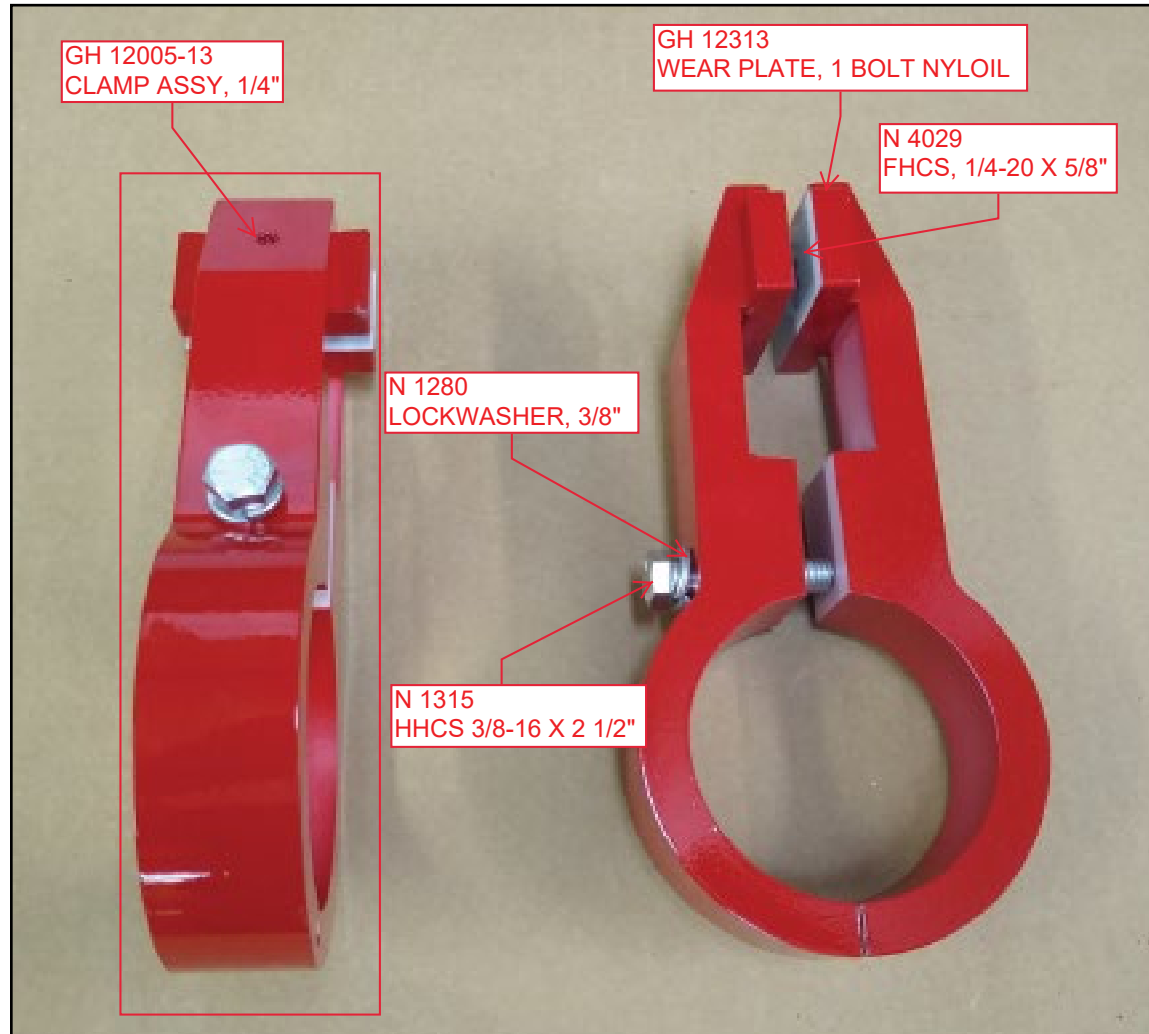
GH 1309A  
SPACER, V ROLLER 1/2"  
4PC

GH 11357  
WHEEL, W4 DUALVEE  
8PC

GH 12065  
CAM WHEEL W/  
SHAFT, 14" ASSY



GH 1205-13, MAGNUM CLAMP ASSEMBLY





**GH 15155, SICKLE DRIVE SPROCKET COVER, MAG RIGHT**

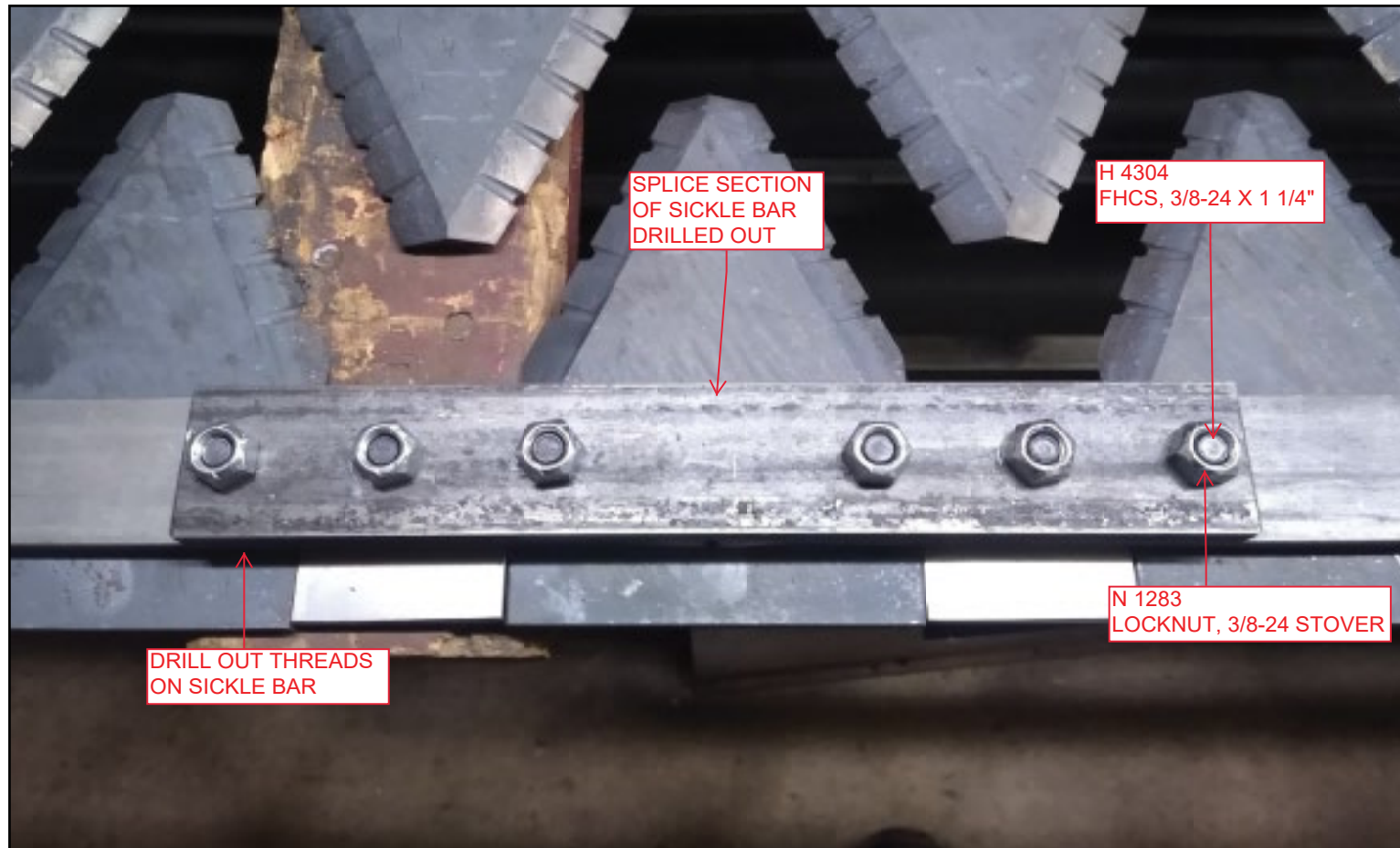
Used on right magnum hedger bars.

**GH 15155L, SICKLE DRIVE SPROCKET COVER, MAG LEFT**

Used on left magnum hedger bars.



SICKLE BAR SPLICE



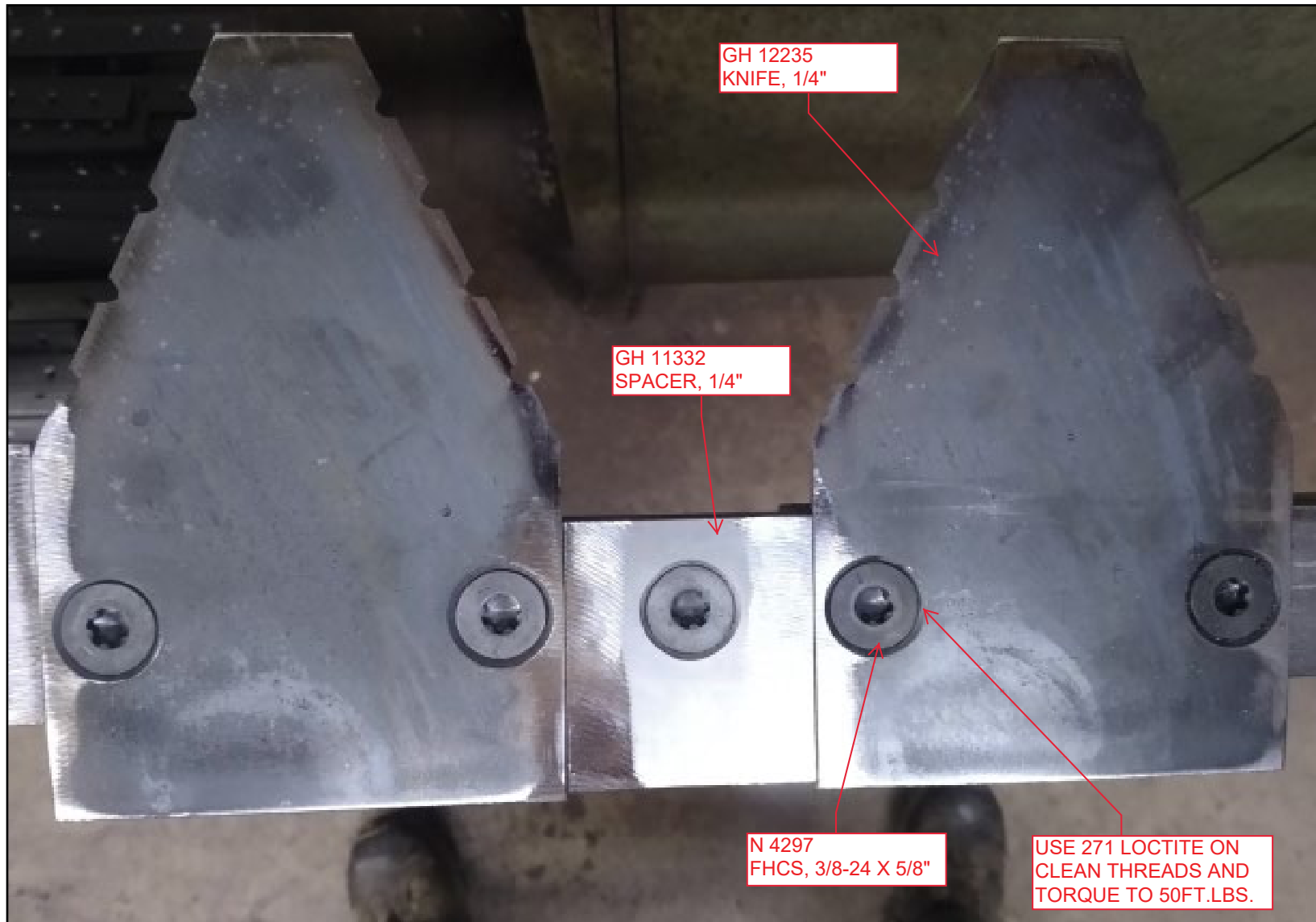
NYLOIL GUIDE PLATES



STEEL GUIDE PLATES



KNIFE ASSEMBLY ON SICKLE BAR





GH 12405, KIT, 1/4 INCH BLADE, HEDGER ACCESSORY



**PART NUMBER REFERENCE LIST**

<b>GVF Magnum Cutter Bar - complete, need to specify right or left</b>	
Description	Item Key
Magnum Head w/ 18 ft Bar	GVF 1028
Magnum Head w/ 15 ft Bar	GVF 1082
Magnum Head w/ 12 ft Bar	GVF 1079
Magnum Head w/ 10 ft Bar	GVF 1077
Magnum Head w/ 7 ft Bar	GVF 1075
Magnum Head w/ 6 ft Bar	GVF 1073
Magnum Head w/ 5 ft Bar	GVF 1072
Magnum Head w/ 4 ft Bar	GVF 1071

<b>Replacement Sickle Bars</b>	
Description	Item Key
Sickle Bar - Right 18 ft	GH 12460
Sickle Bar - Left 18 ft	GH 12470
Sickle Bar - Right 15 ft	GH 12345
Sickle Bar - Left 15 ft	GH 12335
Sickle Bar - Right 12 ft	GH 12285
Sickle Bar - Left 12 ft	GH 12280
Sickle Bar - Right 10 ft	GH 12555
Sickle Bar - Left 10 ft	GH 12535

<b>Sickle Bar Assemblies</b>	
Description	Item Key
Sickle Bar Assy. 18 ft	GH 12045
Sickle Bar Assy. 15 ft	GH 12330
Sickle Bar Assy. 12 ft	GH 12275
Sickle Bar Assy. 10 ft	GH 12530
Sickle Bar Assy. 7 ft	GH 12765
Sickle Bar Assy. 6 ft	GH 12764
Sickle Bar Assy. 5 ft	GH 12605
Sickle Bar Assy. 4 ft	GH 12604

<b>Replacement Tube Assemblies</b>	
Description	Item Key
Tube Assy. 18 ft	GH 12455
Tube Assy. 15 ft	GH 12350
Tube Assy. 12 ft	GH 12290
Tube Assy. 10 ft	GH 12545

<b>Bare Sickle Bars</b>	
Description	Item Key
Bare Sickle Bar, 18 ft	GH 12475
Bare Sickle Bar, 15 ft	GH 12720
Bare Sickle Bar, 12 ft	GH 12305A
Bare Sickle Bar, 10 ft	GH 12540

<b>Miscellaneous</b>	
Description	Item Key
Sickle Knife 1/4	GH 12235
Clamp Assy. Magnum	GH 12005-13
Rotate, Pecan Hedger 110 Degree	GH 3220
Flex Joint, Front for Pecan Hedger	GH 3020

## **GVF WARRANTY**

Gillison's Variety Fabrication, Inc. will replace or repair at GVF option, any GVF manufactured item that is, in the opinion of GVF, defective in material or workmanship for a period of 1 year or 1,000 hours, whichever comes first, from the date of purchase, and is returned to the GVF plant or service center at the expense of the customer. This warranty is made expressly in lieu of all other warranties expressed or implied. **The Warranty Registration card must be completed in full and returned to GVF within thirty (30) days of date of delivery to qualify for this warranty.**

The owner is specifically responsible for the operation and service of the machine. This warranty shall not apply to any product that has been subject to misuse, negligence or accident. In the event of a defect in material or workmanship, GVF sole responsibility is to the repair or replacement of the defective part and is not responsible for lost time or any other expenses incurred due to lost time.

All OEM items such as Tires, Batteries, Engines and Hydraulic components are warranted by the original equipment manufacturer. GVF controls the installation of these products but not the manufacture; therefore, GVF warranty applies to the proper installation but not the OEM component itself.

Retail Customer Responsibility: It is the Retail Customer and/or Operator's responsibility to read the Operator's Manual to operate, lubricate, maintain, and store the product in accordance with all instructions and safety procedures. Failure of the operator to read the Operator's Manual is misuse of this equipment. It is the Retail Customer and/or Operator's responsibility to inspect the product and to have any part(s) repaired or replaced when continued operation would cause damage or excessive wear to other parts or cause a safety hazard.

It is the Retail Customer's responsibility to deliver the product to the authorized GVF dealer, from whom he purchased it, for service or replacement of defective parts, which are covered by warranty. Repairs to be submitted for warranty consideration must be made within 45 days of failure. The Retail Customer is responsible for any cost incurred by the Dealer for traveling to or hauling of the product for the purpose of performing a warranty obligation or inspection.